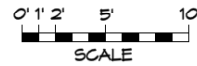


MAIN LEVEL

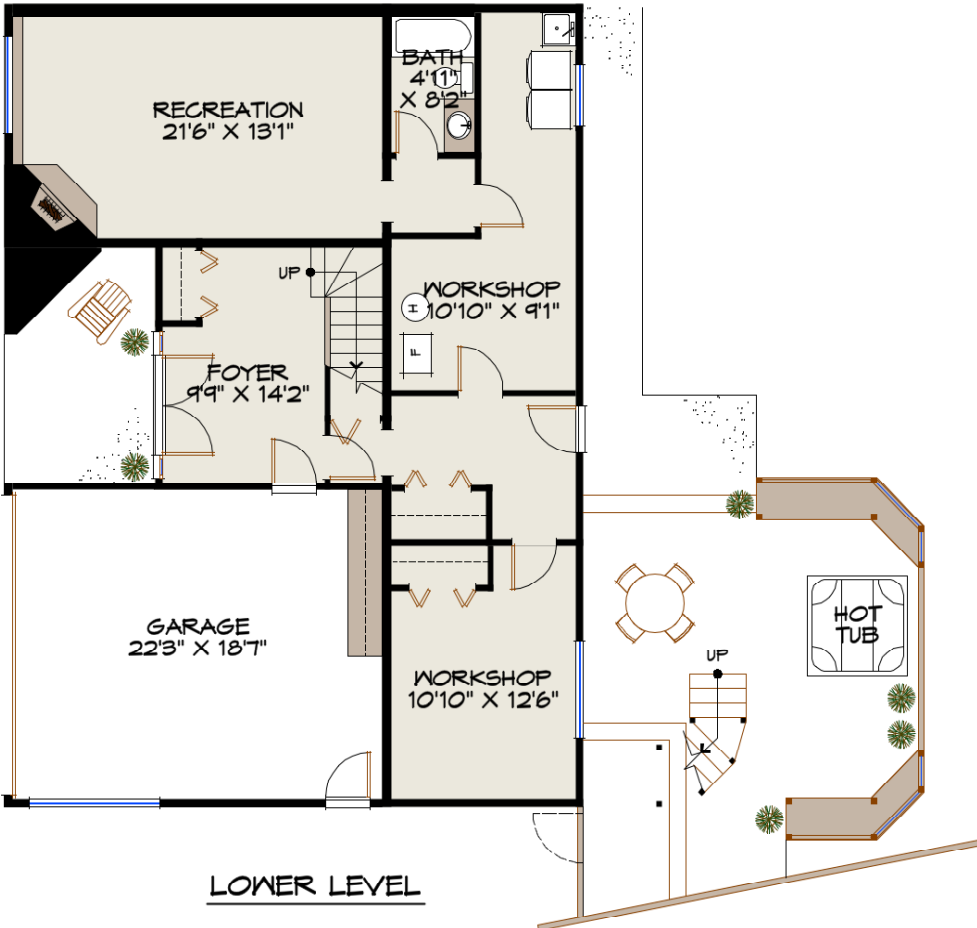
**4536 JEROME PLACE
NORTH VANCOUVER, BC**

MAIN LEVEL:	1503 SF
LOWER LEVEL:	1109 SF
FINISHED FLOOR AREA:	2612 SF
GARAGE:	434 SF
FRONT DECK:	232 SF
BACK DECK:	105 SF

ALL INFORMATION FURNISHED REGARDING THIS PROPERTY IS FROM SOURCES DEEMED RELIABLE BUT NO WARRANTY OR REPRESENTATION IS MADE TO THE ACCURACY THEREOF.



TRUESPACE DESIGN
PREMIUM REAL ESTATE PLANS
604-986-8649 / 778-628-5072
WWW.TRUE-SPACE.CA



LOWER LEVEL



NORTH



THE EDGARS
Real Estate with Personality

Toby Edgar
tobyedgar@shaw.ca
604.723.0072

Christina Edgar
christina@theEdgars.ca
604.219.5400

www.theEdgars.ca